

Enforcer Systems

CPM Technology





The World's First Security System Designed to Force Threats Out – Instantly!

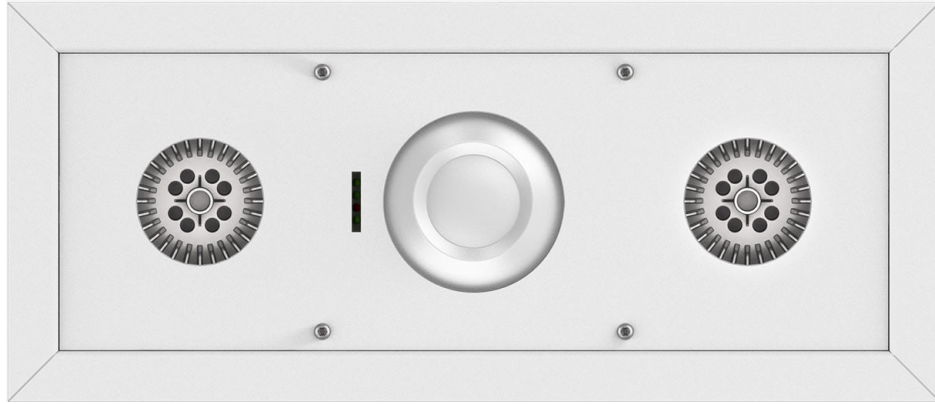
We are a leading security systems manufacturer dedicated to designing and developing next-generation security solutions. With a strong focus on innovation and reliability, we protect families and businesses from crime, intrusion, and theft





Performance that no system in the world can match!

CPM technology stands on its own



100m³ in 12 Sec

Complete Deployment in 12 seconds. High-Pressure, Multi-Point Deployment of Concussive Audible Events Akin to Controlled Explosions.



CPM Liquid

New Smoke Screen Technology. It Blocks Vision, Irritates Eyes, Nose and Throat. Within moments, the perpetrators are overwhelmed, disoriented, and forced to retreat.



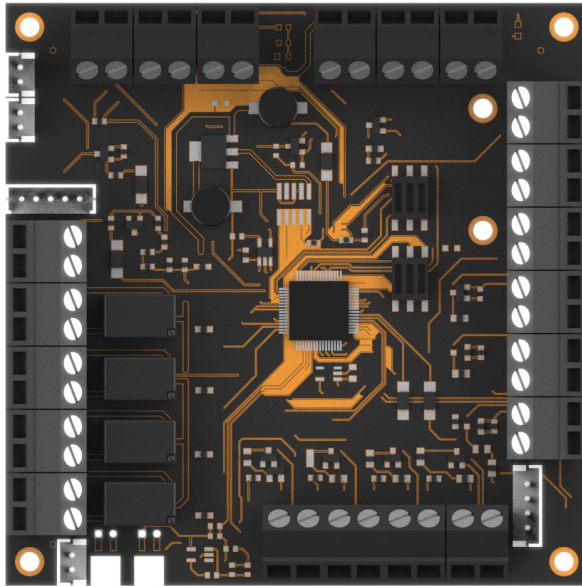
2.8 kg Flush Mount

Light Weight, Aesthetically Pleasing Flush Mount Design. Most Compact in its class.



ECOSYSTEM

Warrant for use in all Environments. Ecosystem friendly, MSDS, Harmless to Humans and Animals, Non-Toxic, Non-Greasy Solution.



12V 220V

Energy-efficient device utilising the alarm system's power supply and its backup battery. Full power redundancy eliminates the need for a UPS.



5V Ignition

Non-Pyrotechnic!
Non-Explosive!
Safe 5V DC Tungsten
Filament Ignition System.



Modular

Modular Expansion, Rapid Installation, Compatible with all Alarm Brands. Master PCB with Powerful MCU Onboard and 360° PIR. Stand-Alone mode. Remote Activation. Multiple Customised Options.



IRMD

Immediate Repeatable Multiple Deployment. Most Potent in its Class. This Technology Doesn't Just Detect Threats...It Ends Them Instantly.

Traditional systems?

01 **Why are traditional intrusion systems proving inadequate and failing to deliver effective solutions?**

In the event that an alarm system is triggered, the authorities or owners will likely be notified. However, it is essential to note that their response will not be immediate. By the time law enforcement arrives at the scene, the perpetrators will likely have fled the premises stealing our belongings and assets.

02 **Why are surveillance cameras not a powerful deterrent any more?**

Although security cameras may capture the criminals presence, the individuals faces will likely be obscured by masks, rendering identification challenging. Video evidence will likely be available for the authorities to begin investigation but assets and belongings will most likely never be recovered.

Enforcer Systems

03 **How is Enforcer Systems proving to be a better and more effective safety and security solution?**

Enforcer Systems are the ACTIVE not the passive solution. Our systems are designed to detect intruders, confirm real-time threats and swiftly release dense, penetrating and highly effective white smoke. This deployment happens in a matter of seconds creating disorientation, confusion and panic to perpetrators causing them to vacate the premises immediately.

04 **Why is Enforcer Systems the logical choice in Safety and Asset Protection?**

We all need to ask our selves what do we actually want from our Security System.

Is it to detect intrusion?

Is it to be an excellent deterrent?

Or is it to protect our belongings and assets?

Traditional Security Systems Were Designed to Deter — Not Defend.

Surveillance and alarms have become baseline measures, not real protection.

In today's risk landscape, deterrence is no longer enough.

Our systems are designed to guard, defend and protect our loved ones and our belongings. We do not allow criminals inside your premises, threatening, stealing and vandalising. We expel intruders from your premises in seconds!

05 **How do our systems work?**

Our systems are designed to detect intruders and swiftly activate, releasing a dense, penetrating, and highly effective white smoke. This smoke disorients and confuses intruders, causing them to vacate the premises immediately, uncertain of their surroundings and potential risks to their safety.

The entire process transpires within 12 seconds, resulting in zero visibility within the affected space and the presence of an unpleasant odor. Essentially, a powerful and efficient smoke screen is created, effectively deterring unwanted guests and preventing any attempts to remove items from the premises.

CPM CHARACTERISTICS:

- Unobtrusive and discreet design
- Completely independent of electrical power sources
- Quick and cost-effective cartridge replacements
- Seamless integration with any existing alarm system or can operate as a standalone system
- Remote activation capabilities via panic buttons and mobile applications

06 **False alarm & Accidental Activation**

One of the most frequently asked questions we receive is whether it is possible for clients to inadvertently activate the system or if intruders could trigger a false alarm to activate the system without actually breaking in.

Our engineers at Enforcer Systems have dedicated countless hours to research, development, and testing to create an advanced PCB architecture (the intelligence of the motherboard) and key protocol algorithms (which lead to system activation). Their efforts have been focused on eliminating the possibility of accidental or incorrect activations.

The system is activated exclusively in the event of an actual break-in, armed robbery, or if an authorized individual decides to activate it for security reasons.

08 **System Benefits**

- Compact & Lightweight
- Fast & Simple installation
- Modular Solution
- Effective Performance
- Dedicated 360° Motion Sensor
- Strong Immunity to False Alarms
- Professional Use Product
- Integration to any Alarm System
- Stand Alone Mode
- Reliable by Commitment to Excellence

Our CPM Systems are made to resist false activations by design. Enforcer Systems engineers have achieved this resilience by adopting complex PCB architecture, custom designed MCU and careful introduction of many important protocols, all housed in one unique apparatus.

By applying this approach, we have achieved extreme performance, outstanding modular system management and high resistance to false alarms all in one package.

Our CPM range of products are for security professionals who demand absolute reliability in their chosen products whilst maintaining well managed and cost controlled custom solutions to their clients.

07 **System IP, Recognitions & Certifications**

- Insurance companies acknowledgement and recommendation
- Police endorsement and recognition
- Public & Products Liability insurance cover
- ASIAL member
- CE compliance pending
- Registered design
- Patents pending

09 **System Safety**

- Ecosystem friendly
- Harmless to humans and animals
- MSDS(Material Safety Data Sheet)
- Non-toxic
- Non-corrosive
- Non-greasy
- Non-explosive
- Non-pyrogen
- Non-pyrotechnic



Dedicated Motion Device

**The Enforcer Systems
CPM range contains a 360
degree Motion Sensor
within the unit.**

The motion detector has a unique and durable spherical lens that can provide 360 degree detection from the installation point. It has a temperature compensation and anti-photometric detection circuit.



PRODUCT FEATURES:

- *Quad Linear imaging technology for Sharp visuals*
- *Bi-directional temperature compensation*
- *10m Detection Range*
- *Variable pulse width adjustment*
- *PIR sensitivity adjustment*
- *Environmental Immunity*

10

SPECIFICATION

- **Working Voltage:** 12V
- **Working Current:** 8mA – 25mA
- **Detection Distance:** 10m
- **Detection Angle:** 360 degrees
- **Installation:** 1.8m – 3.6m height
- **Working Temperature:** -10°C – 50°C
- **Dimension:** 86 x 86 x 25mm
- **Sensor:** Dual noise-free pyroelectric infrared transducer



Compressed Particle Module System

The Enforcer Systems CPM range utilises a new technology, Compressed Particle Module which burns at a high rate to ensure loss of visibility in the protected area.

This technology consists of compressed food grade powders within a compact metal Cartridge. When triggered, the content powder will burn in a very efficient manner.



BENEFITS:

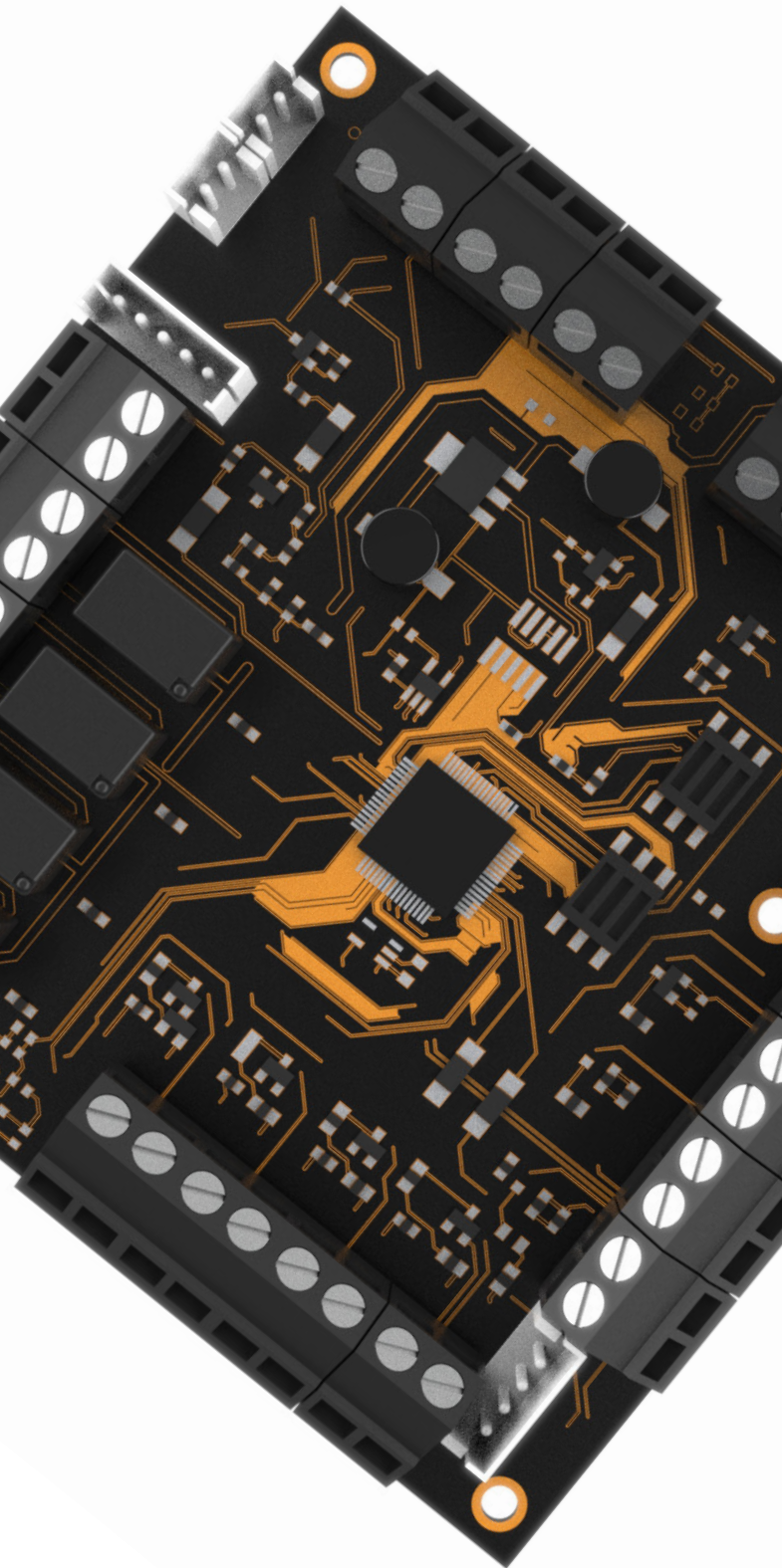
- *Eliminates visibility in the protected area*
- *Incredibly fast deployment and will spread to a wide area*
- *Unbearable to remain in the affected area*
- *Low-cost replacement cartridges*

CPM TECHNOLOGY

The CPM cartridge burns within 6 seconds and can produce an unpleasant smell to force intruders out of the affected area.

Once the 360 degrees motion detector detects an intruder, the unit will disperse one or multiple cartridges (Model Dependent).

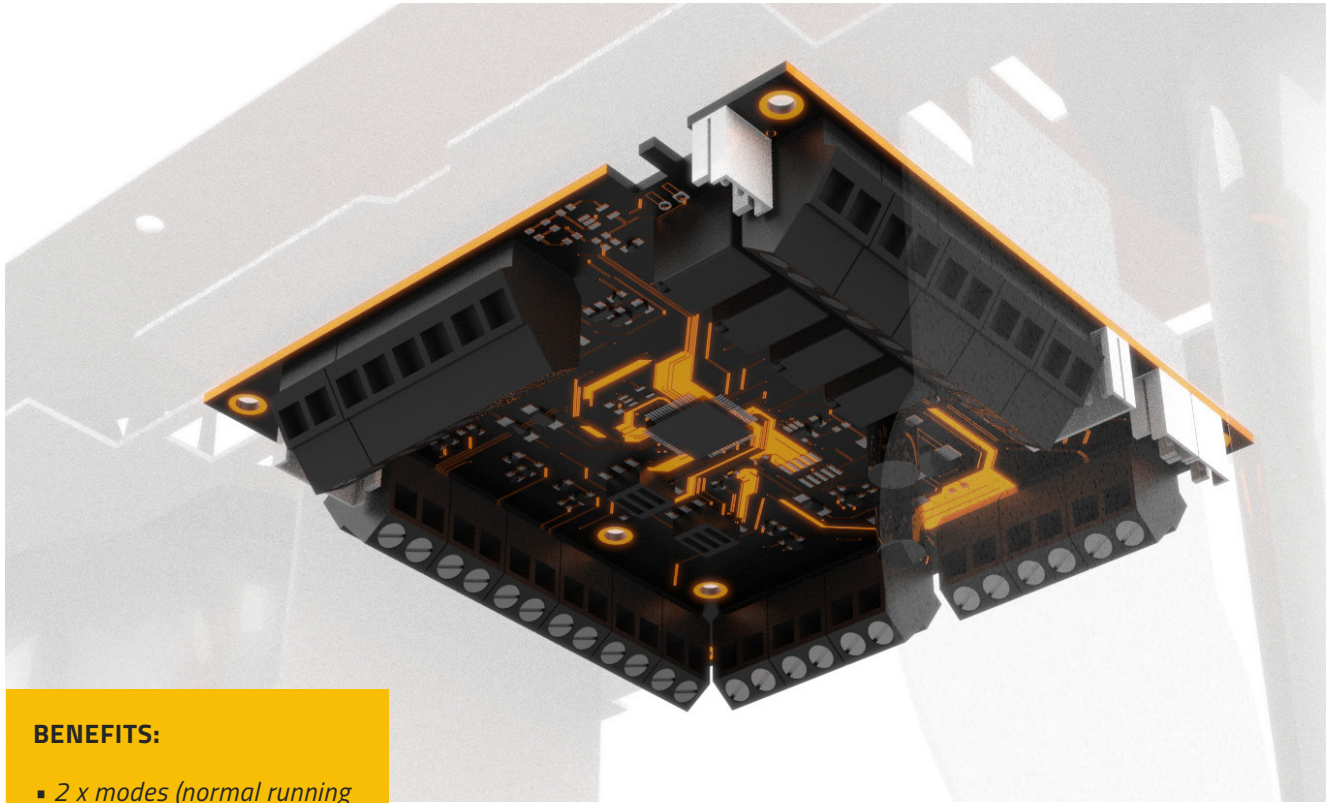
11



PCB

MICROCONTROLLER UNIT

- High performance Arm®, Cortex® - M0+ 32-bit RISC core Operating at up to 64 MHz Frequency. This is a high level integration MCU that incorporates a memory protection unit (MPU), high speed embedded memories for flash and SRAM.
 - Low power consumption device
- Communication interface on board
 - 7 Channel DMA controller with mapping
 - 12-bit, ADC (up to 16 external channels)
 - Up to 59 fast I/Os
 - Clock management
 - 2 watchdogs
 - Temp sensor



BENEFITS:

- 2 x modes (normal running and service)
- 6 x custom dip switch settings for scalable solutions
- 4 x high current main outputs (Max Peak: 5A each)
- 3 x high current sub outputs (Max Peak: 5A each)

12

PCB

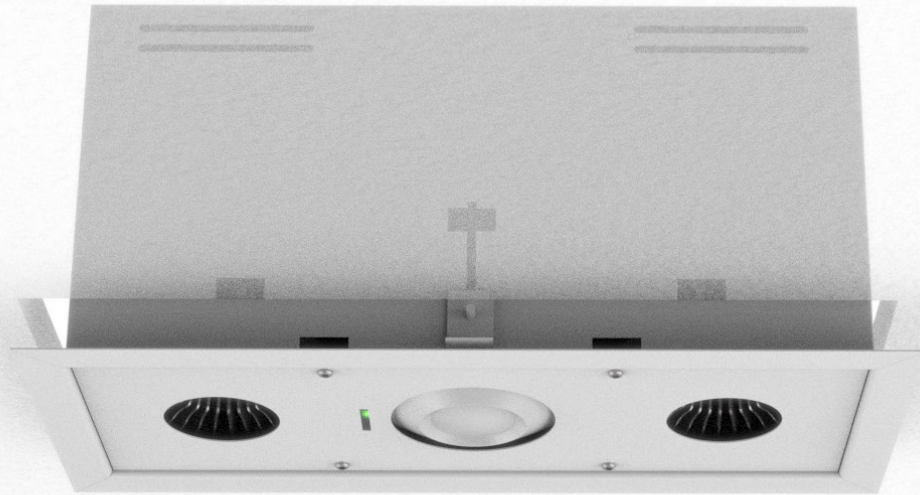
MASTER CONTROL UNIT PCB

- Multiple flexible inputs (primary-trigger, Arm, Sec-trigger1, Sec-trigger2)
- Supervision on-board (Tamper, Service, Trouble)
- Visual & Audible output (Strobe/Siren)
- Dedicated systems outputs on-board (System On, System Activation, System Armed, Service), Service reset switch (Built-in)
- Duress/Panic (Double poll terminals), 24 Hour
- International Standards/Approvals (RoHS, ʘU, CE, ISO 9000)



Housing

By leveraging our advanced technology, you can now prevent the loss of your most valuable assets. Our systems provide real-time monitoring and intervention, ensuring that attempted robberies are thwarted before they even begin, leaving your property secure and untouched.



SPECIFICATIONS:

- *Compact by design*
- *Strong Metal Housing*
- *Modular designed for fast installation*
- *Powder Coated for durability*
- *Lightweight design*
- *Multiple mounting solutions*
- *Off-white in colour*

HOUSING

Our cutting-edge security systems safeguard a diverse range of locations, including petrol stations, jewellery stores, luxury watch boutiques, currency exchange offices, technology warehouses, exclusive retail fashion stores, liquor stores, tobacco shops, convenience stores, private residences, vacation homes, garages, wine cellars, and public facilities seeking proactive measures against criminal activities, armed robberies, and terrorist attacks.

13

14 CPM Range

The Compressed Particle Module range consists of flexible area coverage for scalable solutions:

Master Control Units

E100CPM/MCU covers 100m³

E200CPM/MCU covers 200m³, or allows for 2 activations of 100m³

E300CPM/MCU covers 300m³, or allows for 3 activations of 100m³

E400CPM/MCU covers 400m³, or allows for 4 activations of 100m³,
or 2 activations of 200m³

Sub Units

E100CPM/SU covers 100m³

E200CPM/SU covers 200m³

E300CPM/SU covers 300m³

E400CPM/SU covers 400m³

Filler Units

E100CPM/FU covers 100m³

E200CPM/FU covers 200m³

E300CPM/FU covers 300m³

E400CPM/FU covers 400m³

15 **Dimension**

E100CPM/MCU: H 385mm / W 166mm D 153mm / Weight 2.8kg

E200CPM/MCU: H 385mm, W 166mm / D 153mm, Weight 3.5kg

E300CPM/MCU: H 325mm, W 325mm / D 153mm, Weight 4.2kg

E400CPM/MCU: H 325mm, W 325mm / D 153mm, Weight 4.9kg

16 **Accessories**

EWMBE12R - Wall Mount Bracket for E100/E200 Range

EWMBE34R - Wall Mount Bracket for E300/E400 Range

EWMBEE1234R - Wall Mount Bracket Extender for
E100/E200/E300/E400 Range

ECSBE1234R - Ceiling Support Brackets for E100/E200/E300/E400
Range

EDDSHE12R - Drop-down Support Housing for E100/E200 Range

EDDSHE34R - Drop-down Support Housing for E300/E400 Range





A large, billowing cloud of white smoke or steam fills the room, rising from the floor and reaching towards the ceiling. The smoke is thick and textured, with some darker spots visible. In the background, a window on the right wall lets in bright light, and the ceiling features industrial-style lighting fixtures and structural beams.

You are in control!

Hard Wired Solution to any Alarm System for complete Asset Protection

www.enforcersystems.com.au
sales@enforcersystems.com.au
1300 310 000

